

## SUSPENDED FLOOR CONVECTORS

## MADE-TO-MEASURE

## ELECTRIC HEATER WITH FAN

## FSI-QE

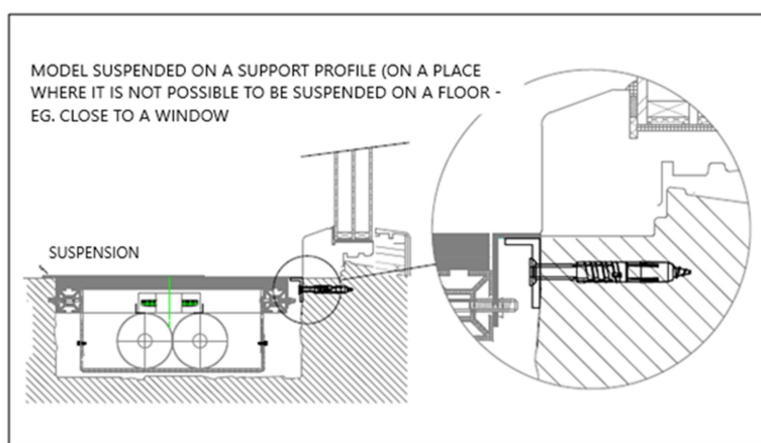
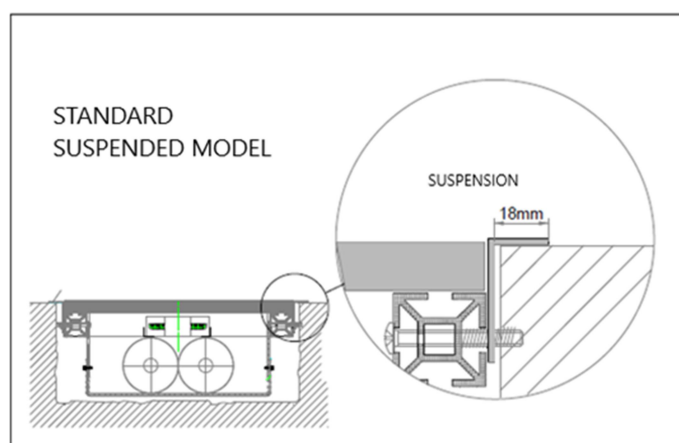


## FEATURES:

- Floor convector is always made to measure to fit a pre-prepared hole in a finished floor.
- Supporting aluminium frame is suspended on perimeter boards.
- Heater – wired exchanger FOXIS 115E,215E,315E.
- Inner plastic basin is open – no impact noise arising.
- The convector can be easily dismantled from the floor.
- Electrical socket 230V – part of electrical installation.



Easier cleaning  
Long service life  
Mechanical ruggedness



## ORDER CODE SPECIFICATION:

Example:

FSI-QE-115E-90-2430-200

FOX SILENT-Q(fan) E (electro) 115E (exchanger type) – 90 (H-height) – 2430 (L-length) – 200 (D-depth).

## ELECTRICAL DESCRIPTION:

- Electric exchanger – FOXIS 15 exchanger with electrical heating rod.
- Heating rod is equipped with an inner reverse thermostat which cuts the electric current off when the temperature reaches 80°C.
- Exchanger electric power 1000W/LM.
- Every exchanger rod is plugged into a socket (part of house/flat electrical installation).
- Regulation – thermostat is highly recommended.

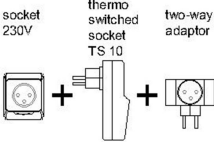
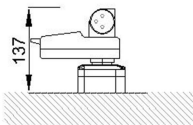
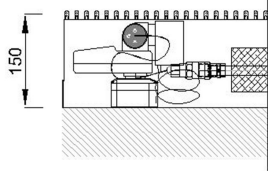
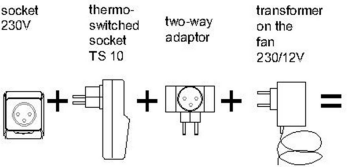
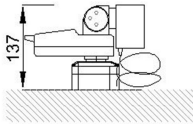
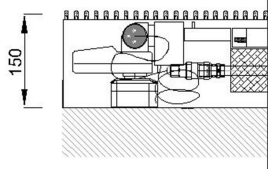
## ELECTRICAL PREPARATION:

Electrical installation must be working before installing the heater itself. Electric voltage is wired from a house/flat switchboard, safed with a 16A circuit breaker, CYKY 3Cx2,5 cable, into a 230V socket. The socket must be placed close to the heater or under a cover in the floor. Thermostat is recommended for the socket.



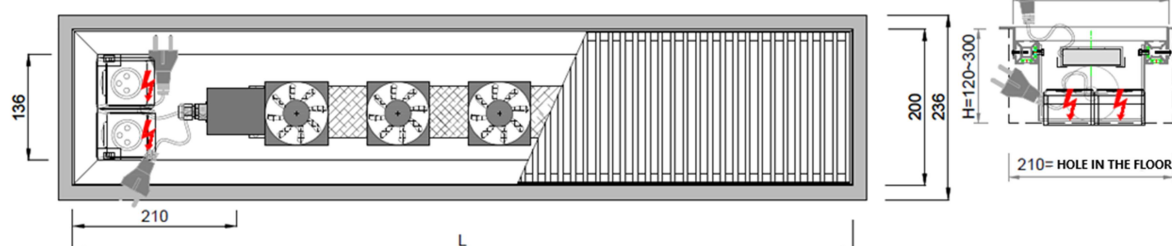
## REGULATION:

If the floor convector is at least 150mm deep, all regulation components may be placed inside.

FSI-E-215E-150-L-300 thermo-switched socket + two-way adaptor plugged in the socket on the floor				
1	without fan MIN 150mm	COMPONENTS	SET	
				
FSI-QE-215E-150-L-300 thermo-switched socket + two way adaptor plugged in the socket on the floor				
2	with fan MIN 150mm	COMPONENTS	SET	
				

FOX SILENT QE heating outputs (W)																				
115E.H.L-200	L	800	900	1000	1100	1200	1300	1400	1500	1600	1700	1800	1900	2000	2100	2200	2300	2400	2500	
	Q(W)	500	600	700	800	900	1000	1100	1200	1300	1400	1500	1600	1700	1800	1900	2000	2100	2200	
	L	2600	2700	2800	2900	3000	3100	3200	3300	3400	3500	3600	3700	3800	3900	4000	4100	4200	4300	
	Q(W)	2300	2400	2500	2600	2700	2800	2900	3000	3100	3200	3300	3400	3500	3600	3700	3800	3900	4000	
215E.H.L-300	L	800	900	1000	1100	1200	1300	1400	1500	1600	1700	1800	1900	2000	2100	2200	2300	2400	2500	
	Q(W)	1000	1200	1400	1600	1800	2000	2200	2400	2600	2800	3000	3200	3400	3600	3800	4000	4200	4400	
	L	2600	2700	2800	2900	3000	3100	3200	3300	3400	3500	3600	3700	3800	3900	4000	4100	4200	4300	
	Q(W)	4600	4800	5000	5200	5400	5600	5800	6000	6200	6400	6600	6800	7000	7200	7400	7600	7800	8000	

FSI-QE-118-H-L-200



FSI-QE-218-H-L-300

