

SUSPENDED FLOOR CONVECTORS ELECTRIC HEATER

MADE-TO-MEASURE



FSI-NE

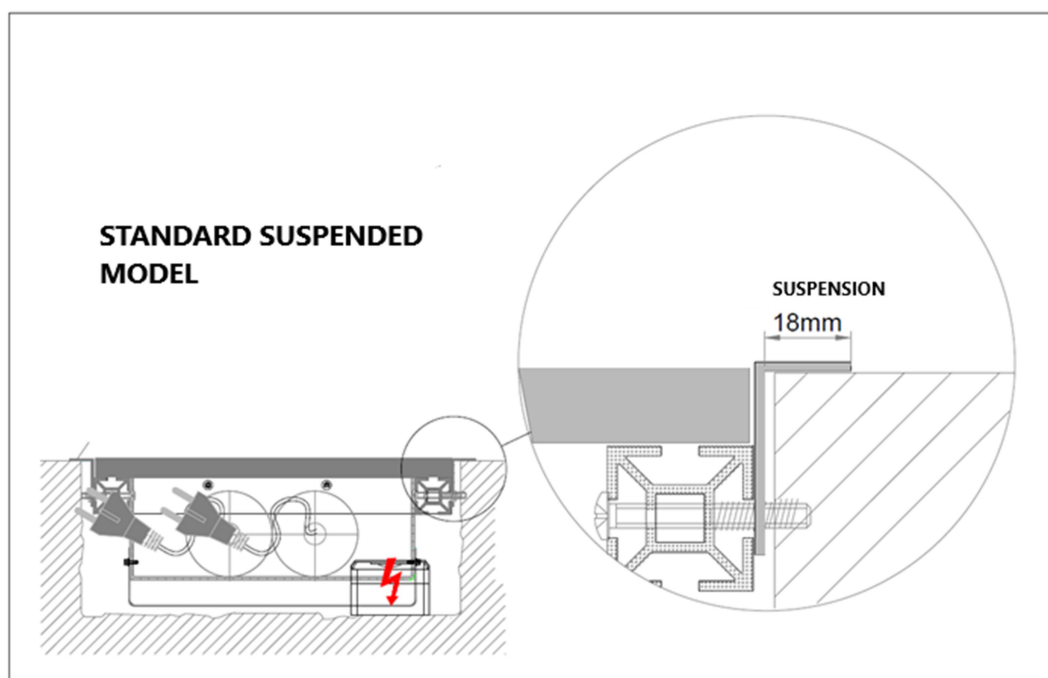


FEATURES:

- Floor convector is always made to measure to fit a pre-prepared hole in a finished floor.
- Supporting aluminium frame is suspended on perimeter boards.
- Heater – wire exchanger FOXIS 115E, 215E, 315E.
- Inner plastic basin is open – there is no impact noise arising.
- The convector can be easily dismantled from the floor.
- Electrical socket 230V – part of electrical installation



Easier cleaning
Long service life
Mechanical ruggedness

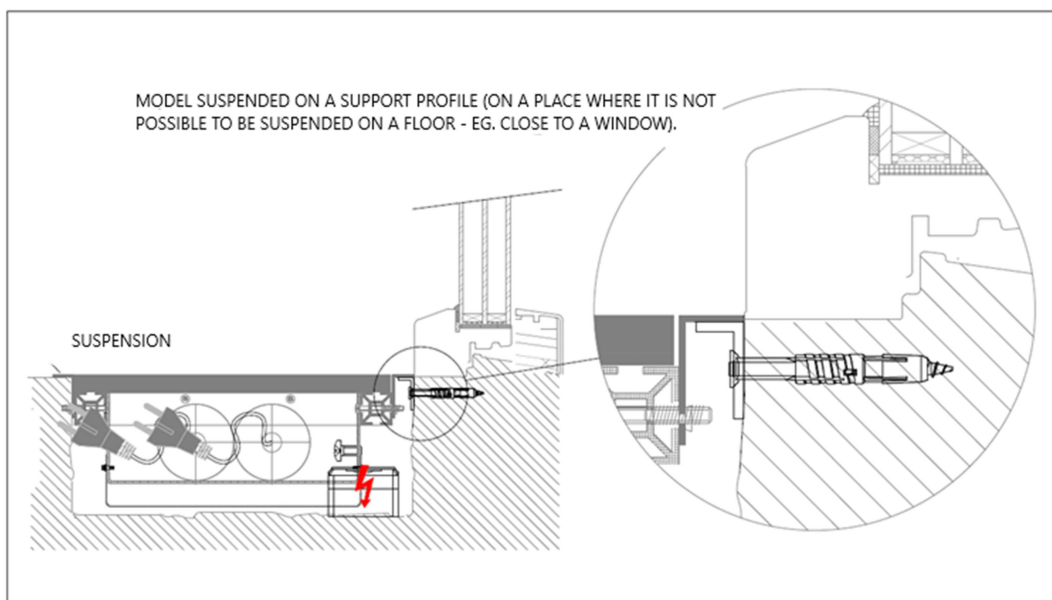


ORDER CODE SPECIFICATION:

Example:

FSI-NE-115E-90-2430-200

FOX SILENT-N(made-to-measure)E(electro)115E(exchanger type)-90(H-height)-2430(L-length)-300(D-depth)

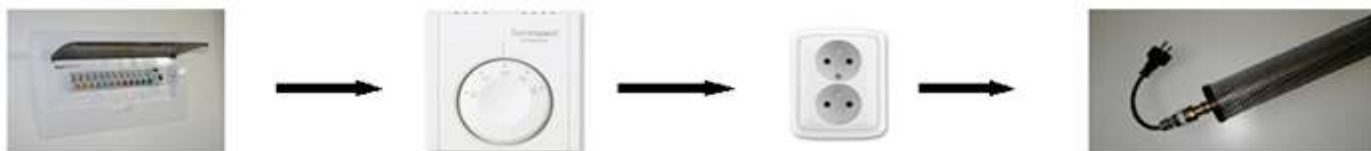


ELECTRICAL DESCRIPTION:

- Electrical exchanger – FOXIS 15 exchanger with electrical heating rod.
- Heating rod is equipped with an inner reverse thermostat which cuts the electric current off when the temperature reaches 80°C.
- Exchanger electric power 300W/LM. (It is possible to set a higher output after considering technical conditions).
- Model with fan (FSI-EQ) can reach up to 1000W/LM of the exchanger rod.
- Every exchanger rod is plugged into a socket (part of house/flat electrical installation).
- Regulation – thermostat is highly recommended.

ELECTRICAL PREPARATION:

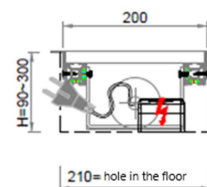
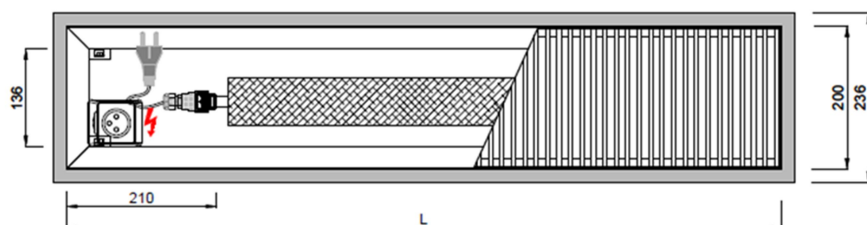
Electrical installation must be working before installing the heater itself. Electric voltage is wired from a house/flat switchboard, safed with a 16A circuit breaker, CYKY 3Cx2,5 cable, into a 230V socket. The socket must be placed close to the heater or under the cover in the floor. Thermostat is recommended for the socket.



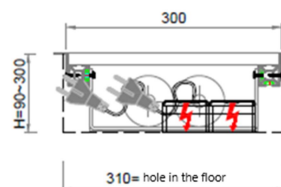
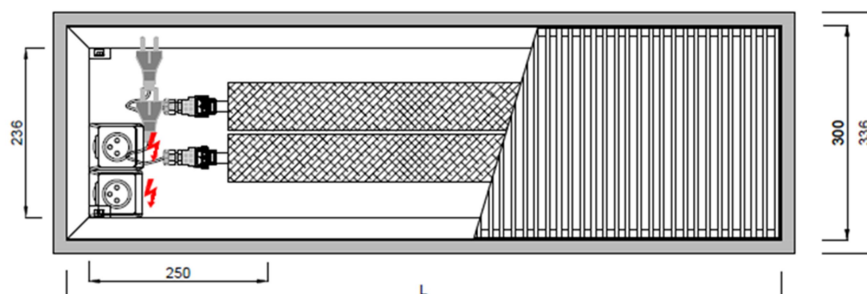
FOX SILENT NE heating outputs (W)

115E-H-L-200	L	800	900	1000	1100	1200	1300	1400	1500	1600	1700	1800	1900	2000	2100	2200	2300	2400	2500
	Q(W)	150	180	210	240	270	300	330	360	390	420	450	480	510	540	570	600	630	660
	L	2600	2700	2800	2900	3000	3100	3200	3300	3400	3500	3600	3700	3800	3900	4000	4100	4200	4300
	Q(W)	690	720	750	780	810	840	870	900	930	960	990	1020	1050	1080	1110	1140	1170	1200
215E-H-L-300	L	800	900	1000	1100	1200	1300	1400	1500	1600	1700	1800	1900	2000	2100	2200	2300	2400	2500
	Q(W)	300	360	420	480	540	600	660	720	780	840	900	960	1020	1080	1140	1200	1260	1320
	L	2600	2700	2800	2900	3000	3100	3200	3300	3400	3500	3600	3700	3800	3900	4000	4100	4200	4300
	Q(W)	1380	1440	1500	1560	1620	1680	1740	1800	1860	1920	1980	2040	2100	2160	2220	2280	2340	2400

FSI-NE-118-H-L-200



FSI-NE-218-H-L-300



FSI-NE-318-H-L-360

