

SUSPENDED FLOOR CONVECTORS HOT WATER HEATER

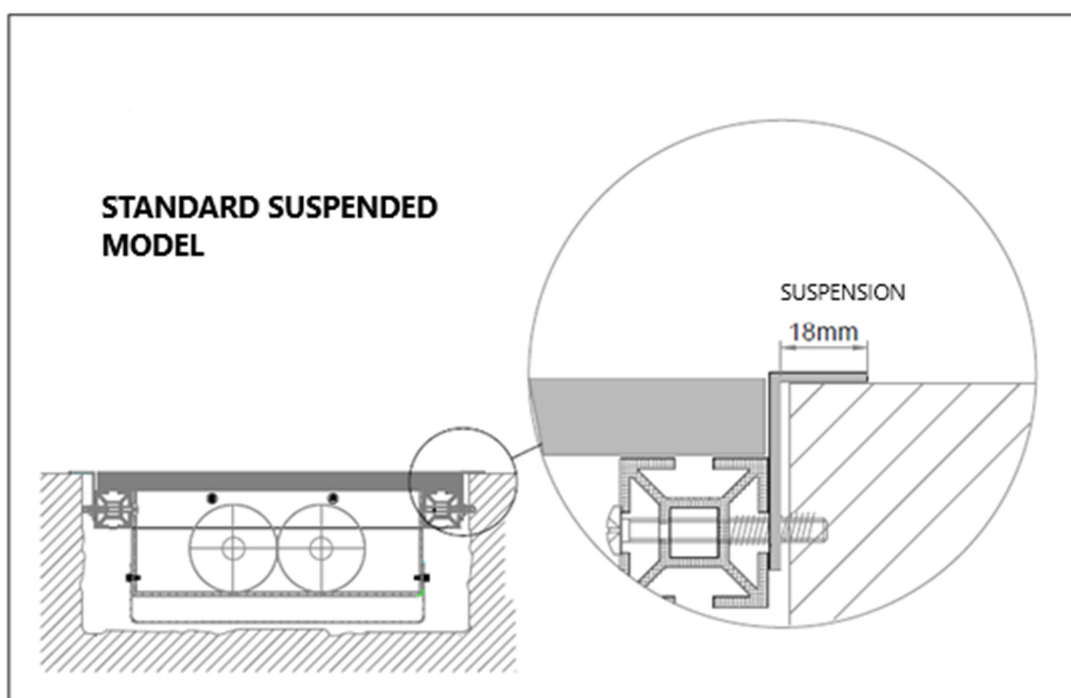
MADE -TO- MEASURE

FSI-N



FEATURES:

- Floor convector is always made to measure to fit a pre-prepared hole in a finished floor.
- Supporting aluminium frame is suspended on perimeter boards.
- Heater – FOXIS wired exchanger type 118, 218, 318, 418.
- Inner plastic basin is open – there is no impact noise arising.
- Convector can be easily dismantled from the floor.



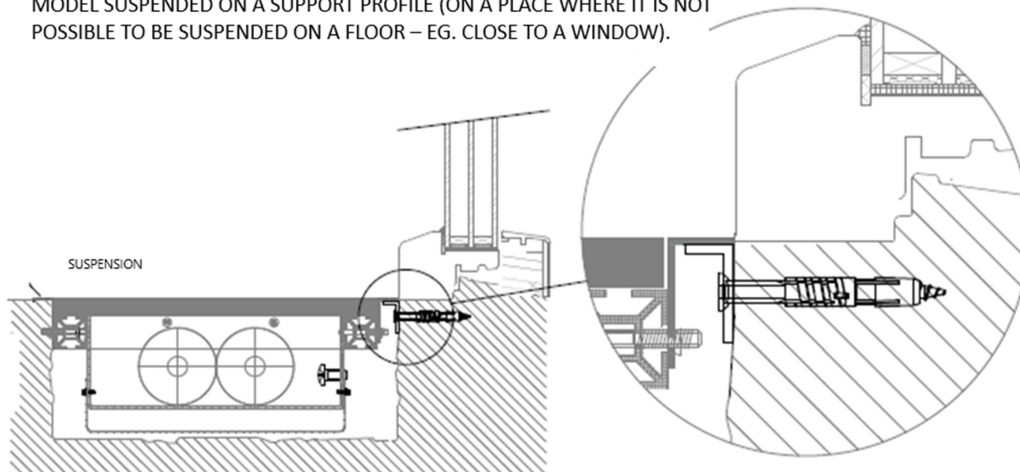
ORDER CODE SPECIFICATION:

Example:

FSI-118-90-2430-200

FOX SILENT-118 (exchanger type) – 90 (H-height) – 2430 (L-length) – 300 (D-depth)

MODEL SUSPENDED ON A SUPPORT PROFILE (ON A PLACE WHERE IT IS NOT POSSIBLE TO BE SUSPENDED ON A FLOOR – EG. CLOSE TO A WINDOW).

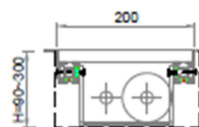
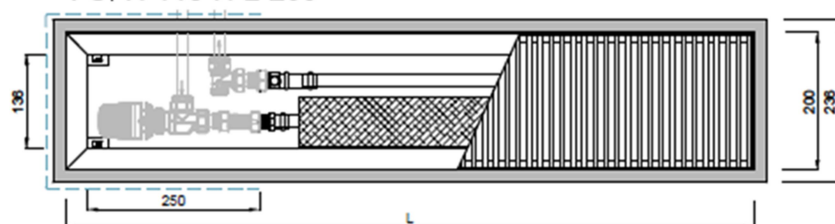


FOX SILENT N heating output (W) depth 110mm

FOX SILENT N heating output (W) depth 110mm																						
FSI-N-118-110-L-200	L	800	900	1000	1100	1200	1300	1400	1500	1600	1700	1800	1900	2000	2100	2200	2300	2400	2500	2600	2700	2800
	ΔT 50°C	140	166	191	217	242	267	293	318	344	369	395	420	446	471	497	522	548	573	599	624	650
	ΔT 30°C	67	79	91	103	115	128	140	152	164	176	188	200	213	225	237	249	261	273	285	298	310
	L	2900	3000	3100	3200	3300	3400	3500	3600	3700	3800	3900	4000	4100	4200	4300	4400	4500	4600	4700	4800	4900
	ΔT 50°C	675	701	726	751	777	802	828	853	879	904	930	955	981	1006	1032	1057	1083	1108	1134	1159	1185
ΔT 30°C	322	334	346	358	370	383	395	407	419	431	443	455	468	480	492	504	516	528	540	553	565	
FSI-N-218-110-L-300	L	800	900	1000	1100	1200	1300	1400	1500	1600	1700	1800	1900	2000	2100	2200	2300	2400	2500	2600	2700	2800
	ΔT 50°C	254	300	346	392	439	485	531	577	623	669	716	762	808	854	900	946	993	1039	1085	1131	1177
	ΔT 30°C	121	143	165	187	209	231	253	275	297	319	341	363	385	407	429	451	473	495	517	539	561
	L	2900	3000	3100	3200	3300	3400	3500	3600	3700	3800	3900	4000	4100	4200	4300	4400	4500	4600	4700	4800	4900
	ΔT 50°C	1223	1270	1316	1362	1408	1454	1500	1547	1593	1639	1685	1731	1777	1824	1870	1916	1962	2008	2054	2101	2147
ΔT 30°C	583	605	627	649	671	693	715	737	759	781	803	825	847	869	891	913	935	957	979	1001	1024	
FSI-N-318-110-L-370	L	800	900	1000	1100	1200	1300	1400	1500	1600	1700	1800	1900	2000	2100	2200	2300	2400	2500	2600	2700	2800
	ΔT 50°C	314	372	429	486	543	600	657	715	772	829	886	943	1000	1057	1115	1172	1229	1286	1343	1400	1458
	ΔT 30°C	150	177	204	232	259	286	313	341	368	395	422	450	477	504	531	559	586	613	640	668	695
	L	2900	3000	3100	3200	3300	3400	3500	3600	3700	3800	3900	4000	4100	4200	4300	4400	4500	4600	4700	4800	4900
	ΔT 50°C	1515	1572	1629	1686	1743	1801	1858	1915	1972	2029	2086	2144	2201	2258	2315	2372	2429	2486	2544	2601	2658
ΔT 30°C	722	749	777	804	831	858	886	913	940	967	995	1022	1049	1076	1104	1131	1158	1186	1213	1240	1267	
FSI-N-318-110-L-400	L	800	900	1000	1100	1200	1300	1400	1500	1600	1700	1800	1900	2000	2100	2200	2300	2400	2500	2600	2700	2800
	ΔT 50°C	391	463	534	605	676	747	818	890	961	1032	1103	1174	1246	1317	1388	1459	1530	1601	1673	1744	1815
	ΔT 30°C	187	221	255	288	322	356	390	424	458	492	526	560	594	628	662	696	730	764	797	831	865
	L	2900	3000	3100	3200	3300	3400	3500	3600	3700	3800	3900	4000	4100	4200	4300	4400	4500	4600	4700	4800	4900
	ΔT 50°C	1886	1957	2028	2100	2171	2242	2313	2384	2455	2527	2598	2669	2740	2811	2883	2954	3025	3096	3167	3238	3310
ΔT 30°C	899	933	967	1001	1035	1069	1103	1137	1171	1205	1239	1273	1306	1340	1374	1408	1442	1476	1510	1544	1578	

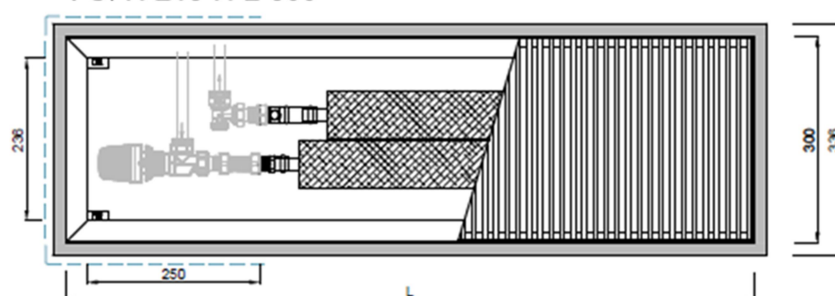
possible connection of the
convector to piping

FSI-N-118-H-L-200

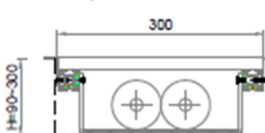


210= hole in the floor

FSI-N-218-H-L-300

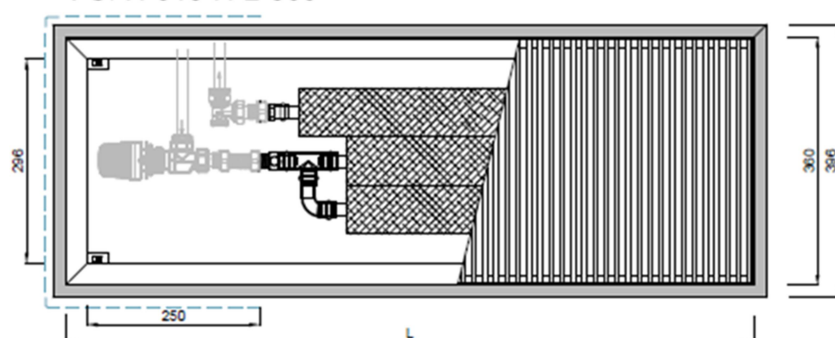


FSI-N-218-H-L-300

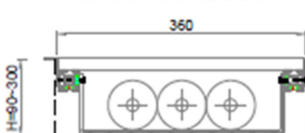


310= hole in the floor

FSI-N-318-H-L-360

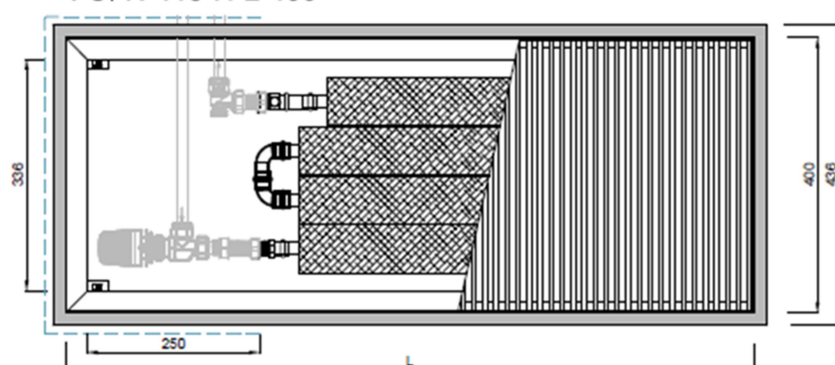


FSI-N-318-H-L-360

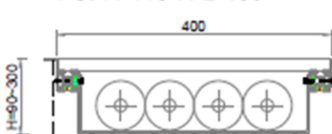


370= hole in the floor

FSI-N-418-H-L-400



FSI-N-418-H-L-400



410= hole in the floor